

2025.08

충북아트센터 기획디자인 국제공모

PLANNING AND DESIGN INTERNATIONAL COMPETITION
FOR CHUNGBUK ART CENTER



충청북도 (문화예술산업과)

Contents

1. Competition Outline 1

1.1 Background of the Competition 1

1.2 Purpose of the Competition 1

1.3 Project Site 2

1.4 Organization 2

1.5 Management of the Competition 2

1.6 Eligibility 2

1.7 Registration 3

1.8 Language and Units 4

1.9 Competition Schedule 5

1.10 Resources 5

1.11 Inquiries(Q&A) 6

1.12 Materials to be submitted 6

1.13 Design Panel(Digital panel) 8

1.14 Jury Committee 9

1.15 Evaluation Process 9

1.16 Evaluation Criteria 10

1.17 Result Announcement 11

1.18 Winner Prize 11

1.19 Compensations 11

1.20 Copyright 11

1.21 Dispute 12

1.22 Anonymity 12

1.23 Exhibition and Forum 12

1.24 After Selection 13

2. Design Guidelines 13

2.1 Project Range 13

2.2 Design Direction 14

2.3 Detailed Requirements 15

1. Competition Outline

1.1 Background of the Competition

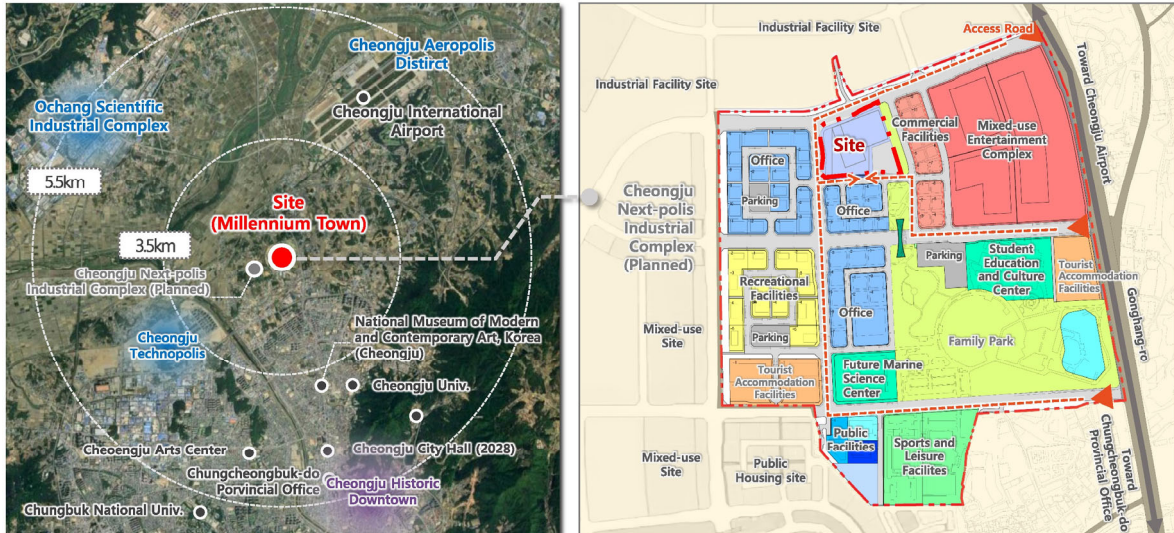
- The Chungbuk Art Center Construction Project aims to expand key infrastructure to lead the future of performing arts in Chungcheongbuk-do (Chungbuk). This initiative aims to strengthen its position and improve its functions as a leading provincial performing arts facility. Beyond merely providing a performance space, the project aims to serve as a cultural hub that links and enhances the region's artistic potential.
- In particular, the Concert Hall will function as the home theater and rehearsal space for the Chungbuk Provincial Orchestra. Furthermore, by hosting and producing performances by top domestic and international orchestras and artists, it will have the potential to grow into a leading performance venue representing the central region of Korea. This will in turn broaden access to cultural and artistic experiences for local residents and contribute to the qualitative advancement of the region's cultural landscape.
- Additionally, its geographic advantages—such as excellent regional transport connectivity via Cheongju International Airport and KTX Osong Station—will enable the Center to attract cultural demand from across the central region, and its location within the Millennium Town complex, in connection with nearby cultural, educational, and sports facilities, will reinforce its position as a central hub for performing arts in the region.
- Within this context, the project has been designated as a flagship initiative for specialized design in cultural arts facilities, with the objective of realizing a more creative and experimental approach to architectural design. Accordingly, the Chungbuk Art Center Construction Project will be implemented as a pilot architectural design initiative through this Planning & Design Competition.

1.2 Purpose of the Competition

- As a cultural landmark representing Chungbuk to address the shortage of cultural facilities in the province, and as a building requiring world-class creative and innovative design, the Planning & Design Competition will be conducted as a priority to determine the design at the initial planning stage, which will be followed by the establishment of the overall project plan. The subsequent schedule is as follows:
 - Through this Planning & Design Competition, five teams will be selected to participate in the forthcoming (invited) Design Competition.
 - From among these five shortlisted participants, a preferred negotiation candidate will be selected after the Design Competition to undertake the design services.
 - After the Planning & Design Competition and preliminary procedures such as the Central Investment Review are completed, the Design Competition will be announced. The announcement of the Design Competition is planned for 2026.
- ※ However, the project may be delayed or suspended during the administrative procedures, and no objections or challenges will be permitted under any circumstances.

1.3 Project site

- Location of the Project Site : Gonghang-ro 329beon-gil, Cheongwon-gu, Cheongju-si, Chungcheongbuk-do, South Korea
- ※ Within Millennium Town, Odong-dong, Cheongwon-gu, Cheongju-si, Chungcheongbuk-do, South Korea



[Location Map of the Project Site]

1.4 Organization

- Chungcheongbuk-do, Culture & Art Industry Division (☎ +82-43-220-3823)

1.5 Management of the Competition

- The management of the competition will proceed the competition in compliance with the competition schedule and regulations.
- Contact : MasilWIDE (competition@masilwide.com, ☎ +82-2-6010-1022)
- Website : <https://www.cbartc.com>

1.6 Eligibility

- Both domestic and international licensed architects are eligible to participate, and joint applications are permitted with up to 3 firms (or individuals).
- In the case of a joint application, all members must be domestic or international licensed architects in accordance with the requirements below. The representative firm in the joint application has the authority to submit and receive documents related to this competition, and to exercise or waive rights on behalf of the joint applicants. (A joint application agreement must be submitted.)
 - A domestic architect must hold an architect license and have no disqualifications under the relevant laws and regulations.

- An international architect is required to hold a foreign architect license and qualification.

(A foreign architect must hold architect qualifications in accordance with the laws of the respective country. Regarding 'One copy of the Architect license', the participants from countries without such licenses must submit a certificate from their national architectural association. If the original document is not in English, an English translation must be provided.)

※ Experts in fields such as landscape architecture, culture, operation, acoustics, and stage facilities, both domestic and international, may collaborate.

- As of the deadline for registration of participation in the planning and design competition, a person who has received cancellation of registration, closure, suspension of business, or other similar administrative dispositions from the relevant government office shall not apply.
- Persons who directly or indirectly participated in this project and planning design competition, such as master plan, advisory, planning, and judges, cannot apply for this competition.
- Individuals or groups participating in this planning and design competition are not allowed to participate in multiple teams.
- For this Planning and Design Competition, participants are not required to be eligible to enter into a contract with Chungcheongbuk-do. However, the five selected teams must, prior to the announcement of the Design Competition (scheduled for 2026), meet the qualifications to contract with Chungcheongbuk-do, which requires holding a valid architect license in South Korea and operating an architectural firm established in accordance with the Certified Architects Act. For the purpose of supplementing qualifications, a domestic firm capable of carrying out detailed design and permitting processes may be added as a joint applicant.
- However, changes to the joint applicants who participated in this Planning and Design Competition are not allowed, and in this Competition, joint applications are permitted with up to 4 individuals (firms)

1.7 Registration

- The registration for the competition is only possible via the Website (<http://www.cbartc.com>).
- Participants must complete membership registration by entering the required information as instructed on the competition website. The unique identification number (hereinafter referred to as the "PIN") is assigned by the participant and will be used to identify participants and their submissions throughout the competition period. Participant registration will be available after completing membership registration.
- Registration Method: Log in to the competition website, click the "Registration" button, and submit the required documents listed below. Registration will be completed upon administrator approval.

- Documents to be Submitted for Registration: Upload the following documents compressed into a single ZIP file
 - [Form 1] x The design competition application
 - Copy of Architect License (Domestic/International)
 - ※ Regarding 'One copy of the Architect license', the participants from countries without such licenses must submit a certificate from their national architectural association. If the original document is not in English, an English translation must be provided.
- The modifications can be made to the information during the registration period, but after the registration period is over, no modifications can be made.
- After completing participant registration, the 'Resources' can be downloaded from My Page.

1.8 Language and Units

- The official languages for the competition are Korean and English.
 - All official documents are prepared and distributed in Korean and English.
 - The applicant should make their submission documents in Korean or English.
- Metric system is used as the measuring scale.

1.9 Competition Schedule

Classification	Date	Note
Announcement of the Competition	Aug 29, 2025 (Fri)	· Announcement through the Chungcheongbuk-do Government, the Korea ON-line E-Procurement System, and the design competition website (http://www.cbartc.com).
Registration	Aug 29 - Sep 26, 2025 (Fri-Fri) by 4:00pm	· Only available on the website
Inquiry Reception	Sep 12-15, 2025 (Fri-Mon) by 4:00 pm	· Submission of inquiries through the website
Inquiry Feedback	Sep 22, 2025 (Mon) at 5:00pm (planned)	· Will be posted on the website
Submissions of Entries	Oct 29-30, 2025 (Wed-Thu), from 10:00 am to 4:00pm	· Only available on the website · The upload must be completed by 15:59pm
Application for Jury Recusal	Nov 3, 2025 (Mon)	· Submit via email to the person in charge of the design competition ※ Within 3 days from the announcement of jury recusal (Oct 30)
Evaluation	Nov 7, 2025 (Fri)	· Selection of 5 Outstanding Entries (Live Online Broadcast)
Winner announcement	Nov 13, 2025 (Thu) (planned)	· Publication on the Chungcheongbuk-do Government and the website (Selection of 5 winning entries)

※ All the schedule and time of this manual are based on Korean Standard Time(GMT+9) and can be adjusted according to the organizer's circumstances. The modification will be posted on the official design competition website (<http://www.cbartc.com>).

1.10 Resources

- Only the participants who have completed the registration can receive the following additional materials for the competition on the website.
 - Design Guideline (pdf)
 - Form (hwp, pdf)
 - Numerical topography drawing of the Millennium Town (dwg)
 - Millennium Town Land Use Plan (dwg)
 - Decision on Millennium Town Buildings, etc. (pdf)
 - Aerial photos around the competition site and drone footage
 - Geotechnical Survey Report for the Millennium Town Development Project (PDF, Korean)
 - Noise and Vibration Report for the Adjacent Development Site (PDF, Korean)
- Provided literature and materials must not be used for purposes other than this design competition partially or in its entirety.

1.11 Inquiries (Q&A)

- The representative of any team who has completed its registration of application can ask questions according to the procedure set on the website.
 - The answers to all inquiries will be provided on the website for all applicants in Korean and English. In the event of a schedule change, it will be announced on the website.
 - Responses to inquiries are regarded as additions or amendments to the planning design competition regulations and guidelines, and are effective as a public report.
 - Questions will not be accepted through channels other than the competition website, such as e-mail or telephone.

1.12 Materials to be submitted

- Submission method : Upload to the designated cloud storage
 - ※ The exact cloud link will be posted on the competition website's notice board seven days prior to the submission deadline.
- The online submission materials are as follows, and for details, refer to [List of Submissions] below.
 - Digital Panel 4 copies : limited to 30MB or less per file (JPG)
 - Other form and document : Compressed into one file (20MB or less of a zip file) and registered in 'the designated cloud storage'
- JPG file should be at least 300dpi or more in order to secure the proper resolution for the original size print-out.
- The submitted data should be the same to the contents in panels and design description as they will be used as materials for publication and promotion after the design competition.
- All submissions must be uploaded before the deadline (Oct 30(Thu), 2025 15:59) so participants must consider the time required for uploading. (If upload is not completed, it may be judged as non-compliance with the submission time and may be disqualified. Unable to upload after 16:00)
- The original of all submissions shall be considered to be kept by the competitor, and the organizer shall not be responsible for any damage incurred in process and after completion of submission. In addition, if there is any damage or loss of the submission due to any reason, the entrants is obligated to re-submit the submission upon request by the organizing party.
- Reference images or case photos not produced by the participants themselves should not be used.
- If an erroneous file is submitted for any reason, the judging committee may disqualify the applicant as 'not following the submission time'.
- The organizing party will request additional documents, in which case the forms and

Planning and Design International Competition for Chungbuk Art Center

submission instructions will be posted on the website.

- Participants should indicate their PIN, automatically given when applying on the competition website, on all submission files, and the PIN shall be used consistently until the competition deadline.
- The list of submission and file names are shown in the following table.

[List of Submissions]

Submission	Submission Content (Unless marked indicated, no limit on number)	File Name
Digital Panel	No.1 panel (top) 1 sheet (jpg, 300dpi or higher) No.2 panel (bottom) 1 sheet (jpg, 300dpi or higher) No.3 panel (top) 1 sheet (jpg, 300dpi or higher) No.4 panel (bottom) 1 sheet (jpg, 300dpi or higher) ※ A1(841 wide * 594 tall mm per panel), 30MB or less	PIN_panel_01.jpg PIN_panel_02.jpg PIN_panel_03.jpg PIN_panel_04.jpg
Representative image	a Representative image (jpg, 300dpi, width 3,840 * length 2,25px, less than 5MB)	PIN_main.jpg
other images	Perspective view in addition to representative image, etc (limited to 5) (jpg, 300dpi each, less than 5MB each images)	PIN_image_01.jpg PIN_image_02.jpg ...
Plan_site plan	A site plan (jpg, 300dpi, less than 5MB each)	PIN_siteplan.jpg
Plan_conceptual diagram	Conceptual diagram (jpg, 300dpi each, less than 5MB each)	PIN_diagram_01.jpg PIN_diagram_02.jpg ...
Plan_floor plan	Each floor plan (jpg, 300dpi each)	PIN_plan_01.jpg PIN_plan_02.jpg ...
Plan_elevation	Elevation (jpg, 300dpi each)	PIN_elev_01.jpg PIN_elev_02.jpg ...
Plan_section	Section (jpg, 300dpi each)	PIN_sec_01.jpg PIN_sec_02.jpg ...
Design description	Design description (pdf, A3(420*297mm), not more than 20 sheets) ※ Exclude covers, slip sheets, etc. from the page count.	PIN_exp.jpg
Document	※ Compress and submit as one file (zip) - [Form 2] 1 × Submission Form - [Form 3] 1 × Representative appointment form - [Form 4] 1 × Joint application agreement - [Form 5-8] 1 × Written pledge, Security memorandum, and Consent form - [Form 9] Architecture Summary - [Form 10] Estimated construction costs summary - [Form 11] Application for evasion and avoidance of judges_if applicable	PIN_document.zip

※ For the announcement or exhibition following the selection of outstanding entries, the awardees shall submit a model (scale 1/400, A1 size), a video (approximately 5 minutes), and presentation materials (including a presentation file)

1.13 Design Panel (Digital panel)

- [Design Panel] Size : Submit four sheets in A1 size (841×594mm), 300 dpi, with each file not exceeding 30MB.
 - Panel should include an architecture summary, perspective view, design concept, site plan (free to scale, mark scale), architectural drawings (floor plan, elevation, section / same scale), and plans for architectural acoustics and noise and vibration control, etc.
 - The choice of fonts and sizes is at the discretion of the participant. However, all fonts must be lawfully licensed through legitimate means such as proper purchase, and must not violate copyright laws.
- Method of panel arrangement is as below.
 - The four sheets should be compiled into a single set in accordance with the table below.

<p>[Panel 01] Top, Self-Configuration</p> <p>※ Panel Size : A1 size (841x594mm) (300dpi or higher)</p> <p>※ File Name : PIN_panel_01.jpg</p>	<p>[Panel 03] Top, Self-Configuration</p> <p>※ Panel Size : A1 size (841x594mm) (300dpi or higher)</p> <p>※ File Name : PIN_panel_02.jpg</p>
<p>[Panel 02] Bottom, Self-Configuration</p> <p>※ Panel Size : A1 size (841x594mm) (300dpi or higher)</p> <p>※ File Name : PIN_panel_03.jpg</p>	<p>[Panel 04] Bottom, Self-Configuration</p> <p>※ Panel Size : A1 size (841x594mm) (300dpi or higher)</p> <p>※ File Name : PIN_panel_04.jpg</p>

1.14 Jury Committee

- The list of jury committee will be announced on the Design Competition website on the submission deadline.
- The Jury Committee will consist of nine members, including domestic and international architects, professors, and experts with specialized knowledge in related fields such as performance hall operation, architectural acoustics, and stage facilities, in accordance with Article 10 of The Guide on the Operation of Public Architectural Design Competition.

1.15 Evaluation Process

- The chair of the jury shall be elected by and from among the attending jurors, preside over the jury committee, and participate in the evaluation.
- The evaluation method shall, in principle, be based on a voting system, but the jury members shall conduct the evaluation only after sufficient discussion of the proposals, and each member shall prepare a written statement of evaluation reasons.
- Submitted proposals that fall under the following cases can be eliminated regardless of the progress of the screening in accordance with the consent of the juries. Even if they are discovered afterwards, the award can be canceled by the decision of the Jury Committee.
 - In case that two or more proposals are submitted
 - In case of prior contact with the judges in relation to this planning design competition
 - In case that the submitted proposal is disclosed before the announcement of the final screening results (including social media)
 - In case that the submitted proposal is the same or similar work of the applicant concerned or other people which has been already disclosed.
 - In case that the applicant is not qualified for competition participation
 - In case of violation of '1.22. Anonymity
- The process of the evaluation will be broadcast live via social media.
(Details of the live broadcast will be announced later.)

[Jurors excluded]

- In case the jury fall under any of the following exclusions or if there are circumstances in which it is difficult to expect fairness in the evaluation, the participant must submit the evidence to the person in charge of the competition by the deadline for Application for Jury Recusal.

(Contact person's email : competition@masilwide.com)

- ① If the committee member or his/her spouse or ex-spouse is directly involved with the party subject to evaluation, or is a co-owner or a co-obligor directly involved with a competing party

- ② If the committee member is/was a relative of a competing party
- ③ When the committee becomes the interested party (including the agency relationship) regarding the execution of business targeted for examination
- ④ When a committee or group to which a committee member belongs is an agent or an agent of a party of the company targeted for examination
- ⑤ If the committee member has been a board member of employee of a competing party within the past three years
- ⑥ If the committee member has performed consulting, research, service, valuation or investigation related to a competing party within the past two years
- ⑦ If the committee member works at the same school as the person subject to review (including Seoul and regional campuses)

[Evaluation]

- Five works will be selected without discrimination through a evaluation process. The number of selected works can be changed according to the decision of the jury committee, and the unique number (PIN number) is announced on the competition website and not individually notified.
 - As for the evaluation method, the head of the jury collects the opinions of the jurors to select the works, and the jury committee prepares the basis for selection according to the form provided by the organization department and leaves it as a record.
 - When the winners are selected, each jurors presents a written opinion about the winners in the form provided by the organizer.

1.16 Evaluation Criteria

- The best plan that best meets the purpose of this competition is selected.
- As for the evaluation method, voting shall be the principle, but it may be autonomously decided by the resolution of the jury committee. After sufficient discussion, the jury committee will select 5 outstanding entries from among the awarded works.
- Regarding this planning design competition, if a participant contacts the judges in advance or acts unfairly, the organization will be immediately notified.
- ※ Evaluation Focus: Propose a creative and innovative planning design suitable for a landmark cultural facility representing not only Chungbuk but the central region as a whole. For details, refer to the Design Considerations.

1.17 Result Announcement

- Selected works will be posted on the competition website(<http://www.cbartc.com>) and publicized through domestic media.

1.18 Winner Prize

- Five works are selected without discrimination through evaluation.
- A design competition (scheduled for 2026) will subsequently be held for the five individuals (teams) selected, and the winning entry will be chosen.
- As a result of the evaluation, if it is determined that the entries are not suitable for the purpose of the competition or the quality is deemed significantly inadequate, no entry may be selected and the competition may be re-announced.

1.19 Compensations

- Each winner (team) will be paid KRW 50,000,000 in compensation.
- If the number of selected works is less than five, the amount shall not exceed 50,000,000 won per team.
- Prizes for both domestic and international winners will be paid in Korean Won.
- The prize money includes Chungcheongbuk-do's usage fee for all works, as well as expenses such as various fees (including transfer fees), taxes, costs for model and video production, and expenses for forum participation.
※ Winners should submit the documents required by Chungcheongbuk-do for prize payment. Failure to do so may result in a delay beyond the scheduled prize payment date.

1.20 Copyright

- Entries must be creative work and must not infringe the copyright of others. The participant(team) will be held accountable for any infringement of copyright, and may lead to rescinding of nomination.
- All rights (copyright and ownership) pertaining to entries belong to the participant(team). If necessary, transference of copyright or use permission may be conducted in which case a separate agreement will be drafted with the participant(team).
- However, the organization is responsible for content-related businesses (archiving, copying, exhibition, distribution, public transmission, creation of secondary works) that do not aim for commercial profit without separate compensation and consultation with the participants (teams) for the participating works. If the idea can be used in publications and used as a guideline for the design competition, no separate copyright usage fee is paid. Participants are deemed to have agreed to this by submitting their work.

- Upon submission, participants are deemed to have granted permission, in the event of winning an award, for the use of their winning entries by Chungcheongbuk-do for non-profit administrative purposes such as investment reviews or architectural planning. The usage fee for the intellectual property rights of the winning entries shall be substituted with the prize money awarded.

1.21 Dispute

- The competition is governed by the relevant laws and regulations of Korea. If any dispute arises, arbitration for the dispute will be conducted by the appropriate court in Korea.

1.22 Anonymity

- The information registered on the Homepage will not be disclosed until the results of the evaluation are announced, and all documents which include the identities of the applicants should be sealed separately when submitting the work.
- Do not put any symbol or code on all submitted materials that others may recognize who submitted that materials.
- Anonymity must be maintained for the entire competition period for the information registered on the website and all the submitted materials. For this, the entrants must not disclose their submitted draft through media including social media, until the winners are selected.

1.23 Exhibition and Forum

- After the announcement of the work selection results, the detailed schedule and contents of the exhibition and open forum will be announced.
- Teams selected as outstanding entries must attend the exhibition (model submission) and the public forum (presentation, etc.).

1.24 After Selection

- The winner (team) of the selected work must develop a plan while maintaining the direction and idea of the submitted work and submit it to the design competition.(scheduled for 2026) At this time, ideas from other selected works must not be used arbitrarily to develop and submit similar plans.
- Winners must actively cooperate with the procedures related to this (written pledge, attendance at the briefing session etc.).

2. Design Guidelines

2.1 Design Scope

- The project site is located within Millennium Town, a mixed-use development comprising business, tourism, and leisure facilities. Positioned between the old city center and the airport, the site is adjacent to the city's major residential and commercial areas. Within the site area of 19,746.8m², designers are encouraged to propose a landmark facility that fulfills the required programs and space requirements, exercising creative discretion and architectural vision in the planning and design process.



[Aerial View of the Millennium Town Surroundings]



[Existing Conditions of the Millennium Town Area]

2.2 Design Direction

The Chungbuk Art Center shall establish a site utilization strategy that organically connects interior and exterior spaces, enabling it to function as an open and accessible space for citizens while establishing a symbolic presence as a provincial performing arts facility, as follows:

- **Securing Symbolism and Openness**

- The Chungbuk Art Center will be planned with a creative design, serving as the premier cultural landmark of the central region while encompassing all 11 cities and counties of the province.
- To embody the identity and representational character of a provincial performance hall, the layout shall comprehensively consider symbolic value, accessibility, and openness.

- **Orientation Toward the Urban Growth Axis**

- Ensure visibility and landmark status within the city.

- **Strengthening Everyday Publicness**

- By creating a continuously shared public space accessible to residents at all times, cultural accessibility and public value in daily life will be promoted.
- It proposes a cultural space that can attract residents even outside performance hours.

- **Connection with Front Plaza and Park**

- To enhance public character, a front plaza that seamlessly connects with the adjacent park will be created, featuring multiple internal and external entrance pathways and open spaces to achieve active openness.

- **Facilities and Parking Planning**

- For the convenience of performance hall visitors and park users, parking lots and ancillary facilities space will be planned to ensure a seamless user experience.
- Parking spaces, both internal and external, are secured at a ratio exceeding the legal parking requirements, taking into account the peak usage hours of the performance facilities.

- **External extension of Cultural Arts Programs**

- External architectural spaces will be designed to accommodate diverse cultural and artistic programs, enabling everyday opportunities for cultural enjoyment throughout the site.

- **Noise and Vibration Planning**

- Due to the significant impact of aircraft noise in the surrounding area, the concert hall and other spaces within the art center shall be designed to prevent noise and vibration interference both between the interior and exterior and among internal spaces, and mitigation measures shall be proposed.

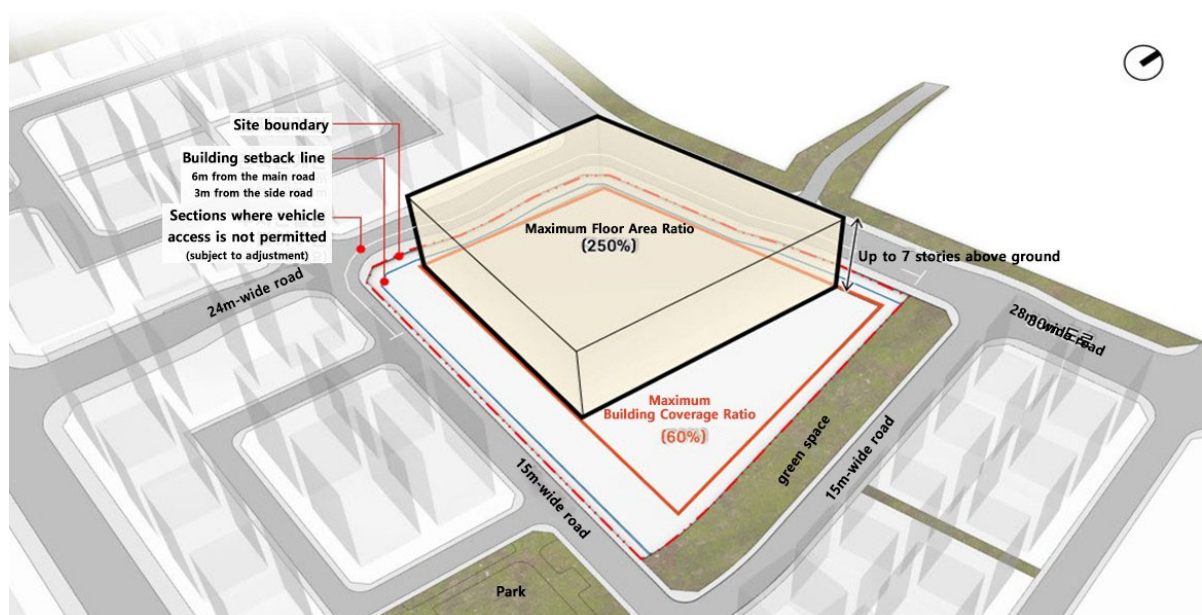


[View of the Project Site from the Road]

2.3 Detailed Design Guidelines

(1) Chungbuk Art Center Construction Site

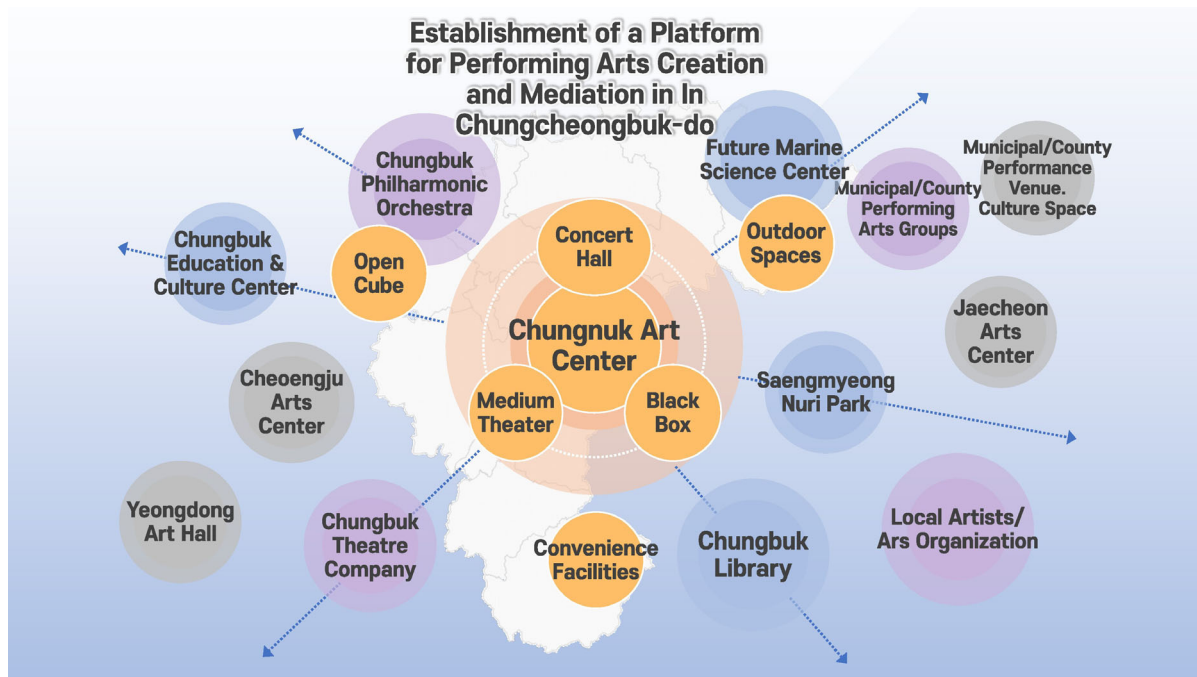
- Site Status and Applicable Regulations
 - Cheongju Millennium Town is a new town development project located in the northern area of Cheongju City, Chungcheongbuk-do. The Chungbuk Development Corporation began developing the area in 2016, with completion targeted for 2030.
 - Site Location: Millennium Town, Odong-dong, Cheongwon-gu, Cheongju City, Chungcheongbuk-do (Complex Cultural Facility and Parking Lot 2 site)
 - Site Area: 19,746.8m²(Complex Cultural Facility Site: 16,168.9m², Parking Lot 2 site: 3,577.9m²)
 - There are current plans for the Parking Lot 2 site within the project area to be converted into Complex Cultural Facility Site in the future.
 - Expected Gross Floor Area : Approximately 32,730m²
 - ※ Building coverage ratio, floor area ratio, and number of floors may be freely proposed within the limits of relevant regulations.
 - Building Coverage Ratio / Floor Area Ratio: 60% or less / 250% or less
 - Height Restriction: Up to 5 floors
 - Use: Cultural and assembly facilities (performance hall)
 - Estimated Construction Cost: KRW 171.0 billion (±5%) / present a plan that is feasible within this cost range.



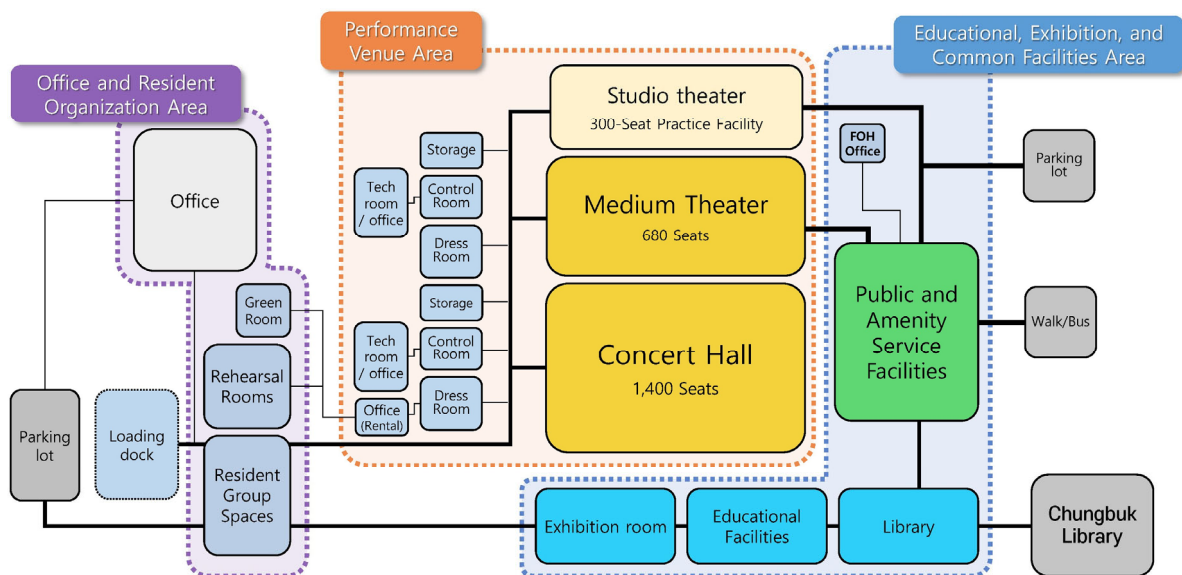
[Chungbuk Art Center Construction Project Site Overview]

(2) Chungbuk Art Center Program Composition

- Establishing a Representative Cultural Hub of Chungbuk and a Symbolic Urban Image
 - By fostering integrated connections with various facilities within Millennium Town, the project will aim to establish a strategic cultural hub, integrating arts, science, and education.
 - Through the Planning & Design Competition, the project will enhance its architectural symbolism and strengthen accessibility via regional transportation networks, positioning itself as the leading cultural center of the central region.



[Establishment of a Platform for Performing Arts Creation and Mediation in Chungcheongbuk-do]



[Diagram of Main Spaces of the Chungbuk Art Center]

Planning and Design International Competition for Chungbuk Art Center

- The design must include the specified uses of 'Performance Facilities' (with strict compliance to a Concert hall of at least 1,400 seats, a Medium Theater of at least 680 seats, and a Studio Theater of at least 300 seats) and 'Office and Resident Group Facilities' Referring to the suggested uses and areas (examples), architects are free to propose additional spaces.

Area Category		Main Space Composition	Area(m²)	Percent age(%)	Remarks
Performance Facilities	Concert Hall	Seating area	1,680	5.13	Dedicated classical concert hall / 1,400 seats
		Stage area	900	2.75	Includes choir seating / stage and waiting areas
		BOH	2,800	8.55	Rehearsal rooms, practice rooms, dressing rooms, lounges, storage
		Subtotal	5,380	16.43	
	Medium Theater (Mid-Size)	Seating area	840	2.57	Proscenium type / 680 seats
		Stage area	900	2.75	Stage and waiting areas
		BOH	2,400	7.33	Practice rooms, dressing rooms, lounges, storage
		Subtotal	4,140	12.65	
	Studio Theater (Small)	Seating area	360	1.10	Black box type / 300 seats
		Stage area	200	0.61	Stage and waiting areas
		BOH	800	2.44	Practice rooms, dressing rooms, lounges, storage
		Subtotal	1,360	4.15	
	Total Performance Facilities		10,880	33.24	
Community Facilities	Education & Exhibition	Exhibition room	600	1.83	Exhibition room
		Lecture rooms, Library	400	1.22	
	Convenience & Commercial	Kids’ Lounge, F&B, sales spaces	1,000	3.06	Cafes, restaurants, retail facilities
	Support Spaces	Management & convenience	500	1.53	
	Total Community Facilities		2,500	7.64	
Office and Resident Group Facilities	Office and Resident Group Spaces	Office support / arts group rehearsal rooms	3,500	10.69	Includes offices, meeting rooms, pantries; accommodates about 100 people in 2 resident groups, rehearsal rooms included
	Total Office and Resident Group Facilities		3,500	10.69	
Common Facilities and Underground Parking	General Common Areas		5,064	15.47	Lobby, lounge, VIP rooms, core / ticket box & house areas
	Facilities Common Areas		1,536	4.69	Mechanical, electrical rooms, generator, disaster prevention
	Underground Parking		9,250	28.26	Parking for 250 or more vehicles
	Total Common Facilities and Underground Parking		15,850	48.43	
Total Gross Floor Area			32,730	100.00	※ Area adjustment allowed within ±3% of total area

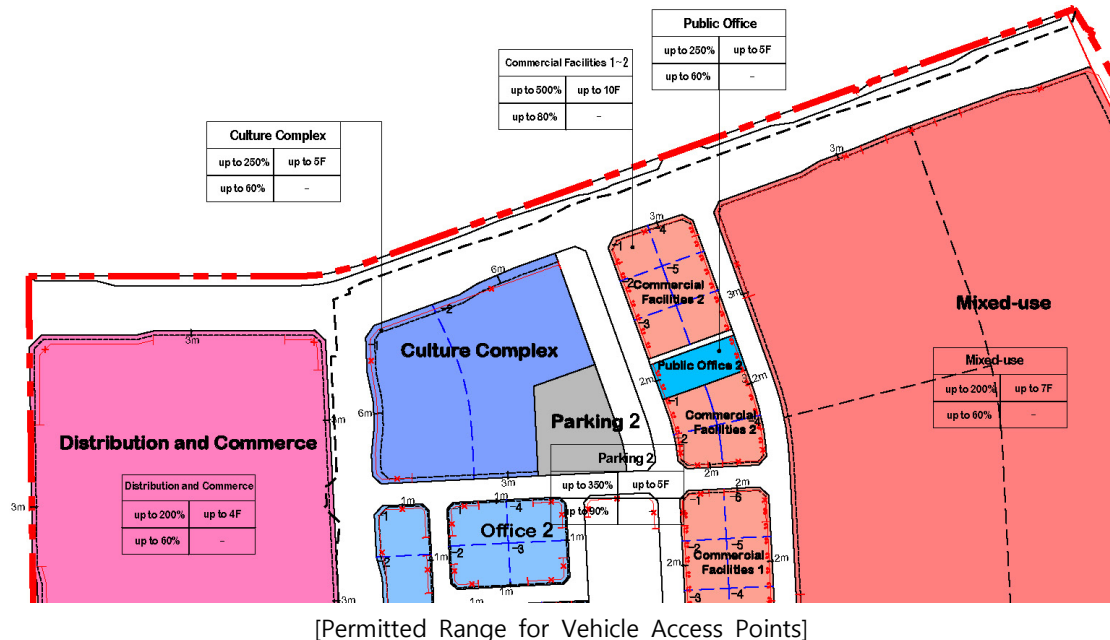
- In addition to the suggested reference uses above, designers must plan additional uses suitable for the envisioned landmark.
 - These public facilities, accessible and enjoyable for all residents, would provide a compelling reason to visit the building, other than attending performances.
 - As Chungbuk's representative cultural facility, the proposed programs should harmonize with the performance and exhibition facilities, and meet the functional needs of Millennium Town.
- Referring to the provided Noise and Vibration Report, a box-in-box construction method (architectural structure separation method) should be actively incorporated into the design to prevent noise from the nearby military airport.
- **External Space Planning**
 - The external spaces of the Chungbuk Art Center shall be proposed as open spaces that are visually harmonious with the architectural design and surrounding environment, and that are culturally closely linked with the building programs.
 - To enhance connectivity with the nearby Family Park, environmentally friendly open spaces utilizing the park should be included in the plan.
 - Rest and convenience facilities should be provided, taking into consideration both users of the Chungbuk Art Center and visitors to Millennium Town.



[Current Status of Parks Surrounding the Project Site]

• Vehicle Access Plan

- In the Building Decision Plan (Decision Map for Buildings, etc.), areas with restricted vehicle access are clearly marked. Proposals, however, may still be made freely, provided they do not disrupt surrounding traffic.



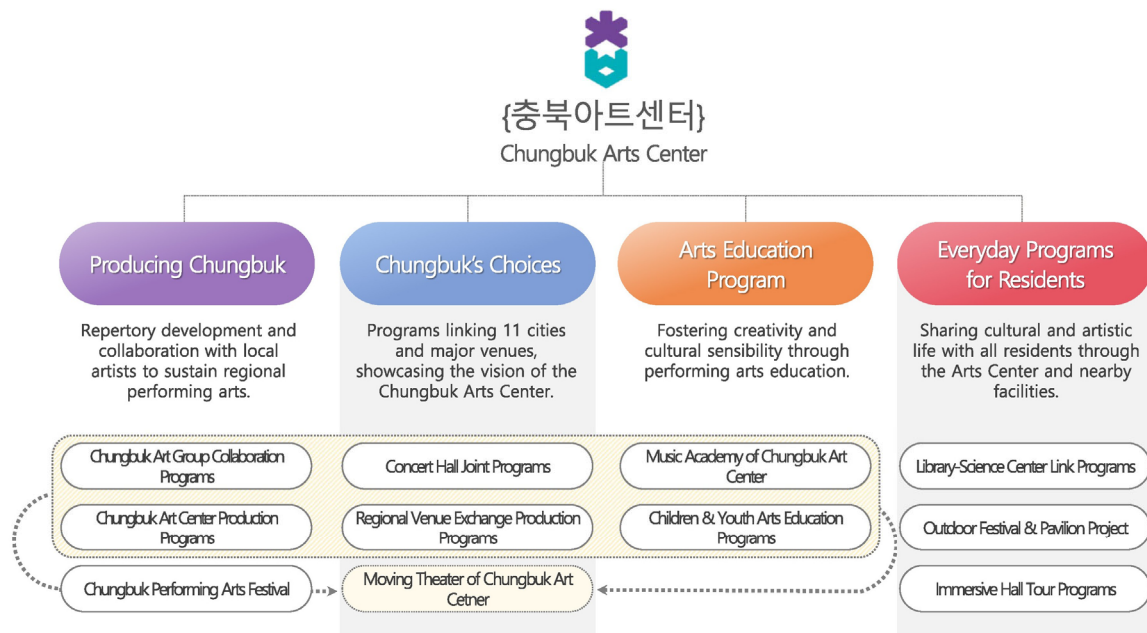
(3) Chungbuk Art Center Operational Plan (Draft)

- Mission of the Chungbuk Art Center
 - The Chungbuk Art Center aims to become the leading professional performing arts center representing Chungcheongbuk-do, elevate the status of the province's performing arts and cultivate artistic pride among residents, while serving as a unifying hub for all 11 cities and counties. To achieve these goals, three operational strategies have been outlined.



Planning and Design International Competition for Chungbuk Art Center

- Chungbuk Art Center Program Operation Plan (Draft)
 - In line with the future operational direction of the Chungbuk Art Center, the plan shall include the following four program types:



- 1) A program series that represents the internal and external orientation of the Center, based on a network with the 11 cities and counties and major performing arts venues across the province, and featuring a variety of performances
- 2) Development of repertoires for the provincial arts companies and collaborative production programs with local artists and organizations, aimed at fostering the growth of region-based performing arts and ensuring the sustainability of local creative activities
- 3) Programs providing opportunities for Chungbuk residents and future generations to cultivate creative daily lives and cultural sensitivity through performing arts-based education
- 4) An open cultural and artistic sharing of daily life accessible to all residents, which encompasses all spaces of the Chungbuk Art Center and nearby facilities